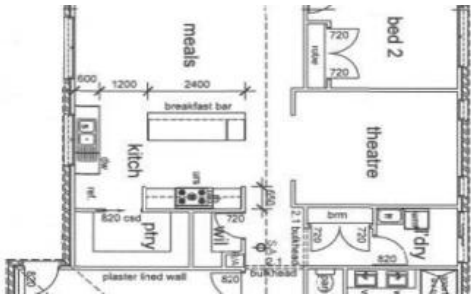


Sold



60 Calibre Circuit, Clyde North



Fixed Price Home & Land. More Home for Less

Don't miss out. Limited time only. Enquire about this home today.

Fixed price package includes:

- Stainless steel dishwasher
- Coloured & sealed driveway and associated path up to 30sqm
- Panel lift door with automated lifter, remote controlled
- Mixer tapware (Basin/Shower/Wall sink/Laundry)
- 1 TV point connected to FTA antenna
- 40mm polished edge stone benchtops to kitchen
- 900mm stainless steel free standing oven with gas cooktop and Slideout rangehood
- Tiles to all wet areas
- Keyed locks to openable windows
- Soft close drawers throughout
- Twin pull-out kitchen bins
- Gas ducted heating
- Quality carpet & underlay in remaining areas
- Exhaust fans with draft stoppers
- Hard wired smoke detectors
- Solar Hot Water with Rinnai Hot water system with gas booster & cell
- Plus, a Lot more

🛏️ 4 🏠 2 🚗 2 📏 462 m2

Price	SOLD
Property Type	Residential
Property ID	12
Land Area	462 m2
Floor Area	222.96 m2

Agent Details

Anand Woodhoo - 0412976270

Office Details

Victorian House & Land Specialists
 8 Universal Way Cranbourne West
 VIC 3977 Australia
 03 5995 3911



Please visit our Darcy24 display at 11 Wonder Street, Officer or call Vinay on 0405 695 442 for more information..

*Price is subject to site costs, additional design guidelines, travel when applicable & developer's approval. Base price includes standard brick façade. Price/information is subject to change without notice. Images are for illustration purpose only and house is to be constructed.

The above information provided has been furnished to us by the vendor/s. We have not verified whether or not that information is accurate and do not have any belief in one way or the other in its accuracy. We do not accept any responsibility to any person for its accuracy and do no more than pass it on. All interested parties should make and rely upon their own inquiries in order to determine whether or not this information is in fact accurate.