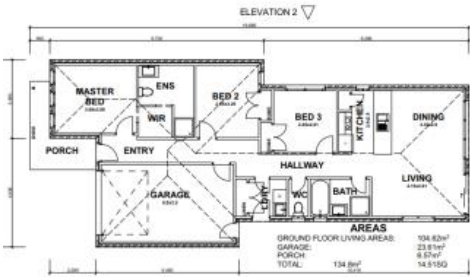


Sold



Clyde North



TITLED LAND! READY TO BUILD! CLYDE NORTH!

VHLS proudly presents HOUSE & LAND PACKAGE with DRIVEWAY, ESTATE REQUIREMENTS, STONE BENCHTOPS, DUCTED HEATING, FLOOR COVERINGS, STAINLESS STEEL APPLIANCES, FLYSCREENS.

Short proximity to

- The Avenue Shopping Centre
- Eden Rise Shopping Centre Berwick
- Cafes & medical centres
- Monash Freeway & Casey Hospital
- Berwick & Merinda Park Train Stations
- Hillcrest & Riverchrest College

Fully customizable designs & finance options available. Call Vinay on 0405 695 442 for more information.

Features Include:

- Coloured & sealed driveway and associated path up to 30sqm
- Panel lift door with automated lifter, remote controlled
- Mixer tapware (Basin/Shower/Wall sink/Laundry)

🛏 3 🗺 2 🚗 2 📏 281 m²

Price SOLD for \$455,200

Property Type Residential

Property ID 61

Land Area 281 m²

Agent Details

Anand Woodhoo - 0412976270

Office Details

Victorian House & Land Specialists
 8 Universal Way Cranbourne West
 VIC 3977 Australia
 03 5995 3911



Stainless steel appliances
Floor Tiles to Entry, Hallway, Kitchen, Meals and Wet areas
Carpet from builders range
Ducted Heating to 6 points
Profile Mixer Taps
Polished Edge Mirrors
Soft Close draws & doors to kitchen and vanities
High Overhead cupboards to Kitchen
800mm wide breakfast bar
Pull Out Bin to Kitchen
Fly screens to all windows
Family area with glass sliding external-access door
Robes to bedrooms 2 & 3
Fall Allowance 500mm
Termite Protection
Insulation as required per 6 star energy rating report
13 Weeks Maintenance Period
Ten Year Structural Guarantee
Solar Hot Water OR Recycled Water where required

The above information provided has been furnished to us by the vendor/s. We have not verified whether or not that information is accurate and do not have any belief in one way or the other in its accuracy. We do not accept any responsibility to any person for its accuracy and do no more than pass it on. All interested parties should make and rely upon their own inquiries in order to determine whether or not this information is in fact accurate.