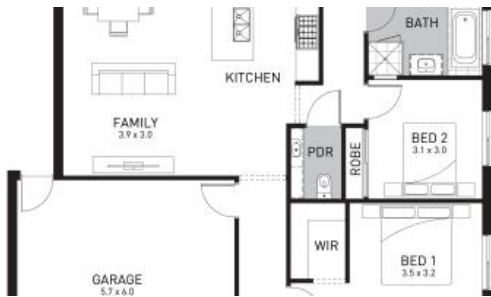




Lot 24 Petty Road (Bunyip Meadows Estate), Bunyip



Your Future Awaits in Bunyip – Fixed Price House & Land Package, Titled 701m² Block

Escape the hustle of city life with this Fixed Price House and Land Package in the sought-after Bunyip Meadows Estate. Nestled on a spacious 701m² block, this property provides plenty of room for outdoor entertainment and kids to play, making it the ideal foundation for your dream family home.

Ideal for first-home buyers, growing families, or investors seeking great value, this block offers a rare opportunity to secure a slice of Bunyip's peaceful lifestyle. Conveniently located near Bunyip Train Station and Town Centre, enjoy easy access to shops, cafes, schools, and transport options. Plus, Gumbuya World is just 10 minutes away for endless family fun!

Don't miss your chance to own this incredible property—call **Matt** today at **0410 692 304** to make it yours!

INCLUSIONS

- Fixed Site Costs & Rock Removal
- 900mm Technika Bellissimo Appliances
- 20mm Caesarstone Benchtop to Kitchen/Ens/Bath
- Dishwasher
- Tiled Shower Bases
- Floor tiles to Ensuite, Bathroom, Laundry, WC, Kitchen, Meals and Entry, as

🛏️ 4 🌳 2 🚗 2 📏 701 m²

Price	\$740,603 Titled
Property Type	Residential
Property ID	6596
Land Area	701 m ²
Floor Area	207 m ²

Agent Details

Matthew Bonnett - 0410692304

Office Details

Victorian House & Land Specialists
 8 Universal Way Cranbourne West
 VIC 3977 Australia
 03 5995 3911



per plans.

- Carpet to non-tiled areas.
 - Coats of Wattle Paint to Internal Walls
 - Blockout Roller Blinds
 - 2 Split Systems to Family Room and Bedroom 1
 - Gas ducted heating to Living Areas and Bedrooms
 - Led Downlights to Main Living Area
 - Plain Coloured concrete paving to Driveway
 - Remote Control Garage Door
 - Flyscreens and window locks to be installed to all openable window sashes.
 - And so much more.... Please contact Matt for the full inclusion list
-

* Price and information are subject to change without notice. Land is available at the time this publication was advertised. Kindly enquire with the agent about availability. The price does not include community infrastructure levies imposed or any other fees or disbursements associated with the settlement of the land. Building Construction price is subject to additional design guidelines & travel when applicable. The base price includes a standard brick façade. Images are for illustration purposes only. The house to be constructed.

The above information provided has been furnished to us by the vendor/s. We have not verified whether or not that information is accurate and do not have any belief in one way or the other in its accuracy. We do not accept any responsibility to any person for its accuracy and do no more than pass it on. All interested parties should make and rely upon their own inquiries in order to determine whether or not this information is in fact accurate.