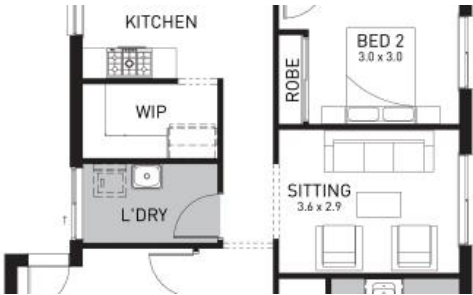


Just Listed



Lot 604 Vizsla Street (Sapphire Estate), Cranbourne East



Titled Land & Turnkey Perfection – Your New Home in Cranbourne East

Create your future in the prestigious Sapphire Estate with this Fixed-Price Turnkey House & Land Package. With titled land ready to build, this is your chance to make your dream home a reality. Whether you're a first-home buyer, a growing family, or an astute investor, this opportunity is too good to miss!

What You'll Love:

- Fixed-price Turnkey package for complete peace of mind.
- Titled land – start building immediately!
- Shopping Made Easy: Minutes to Shopping on Clyde, Selandra Rise and Cranbourne Park Shopping Centre,
- Family-Friendly Living: Close to parks, childcare, and top schools like Clyde Primary School, Casey Grammar, St Thomas the Apostle Catholic Primary School and Casey Fields Primary School.
- Recreation Nearby: Stay active with Casey Fields Sports Complex right around the corner and nearby Casey RACE
- Hassle-Free Commutes: Easy access to Cranbourne Train Station for city travel.

🛏 3 🌳 2 🚗 1 📏 315 m²

Price	\$672,065 Turnkey
Property Type	Residential
Property ID	6687
Land Area	315 m ²
Floor Area	167 m ²

Agent Details

Matthew Bonnett - 0410692304

Office Details

Victorian House & Land Specialists
8 Universal Way Cranbourne West
VIC 3977 Australia
03 5995 3911



Don't let this opportunity slip away! Call **Matt** on **0410 692 304** today and secure your spot in Sapphire Estate.

Inclusions:

- Fixed Site Costs & Rock Removal
- 900mm Kitchen Appliances
- 20mm Caesarstone Benchtop to Kitchen/Ens/Bath
- Dishwasher
- Tiled Shower Bases
- Floor tiles to Ensuite, Bathroom, Laundry, WC, Kitchen, Meals and Entry, as per plans.
- Carpet to non-tiled areas.
- Block-out Roller Blinds to Windows
- 2 Split Systems to Family Room and Bedroom 1
- Gas ducted heating to Living Areas and Bedrooms
- Led Downlights to Main Living Area
- Landscaping To Front & Rear of Property
- Plain Coloured concrete paving to Driveway, Path to Porch, Porch & Outdoor Living.
- Letterbox, Clothesline, Fencing
- Remote Control Garage Door
- Flyscreens and window locks to be installed to all openable window sashes.
- And so much more.... Please contact Matt for the full inclusions list

Note: Optional 4th bedroom or 3 bedrooms plus second living area. Contact Matt for details

* Price and information are subject to change without notice. Land is available at the time this publication was advertised. Kindly enquire with the agent about availability. The price does not include community infrastructure levies imposed, or any other fees or disbursements associated with the settlement of the land. Building Construction price is subject to additional design guidelines & travel when applicable. The base price includes a standard brick façade. Images are for illustration purposes only. The house to be constructed.

The above information provided has been furnished to us by the vendor/s. We have not verified whether or not that information is accurate and do not have any belief in one way or the other in its accuracy. We do not accept any responsibility to any person for its accuracy and do no more than pass it on. All interested parties should make and rely upon their own inquiries in order to determine whether or not this information is in fact accurate.