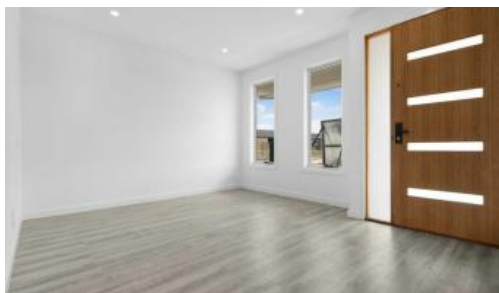


Just Listed



2 Newcastle Road, Rockbank



House and Land Package available for sale in the popular ROSEHILL ESTATE

Brand New House & Land to be constructed in Rockbank!

House is yet to be constructed

Call Kevin on 0490 030 197 for more information.

Reserve this brand-new Fixed Price Turnkey House & Land package.

TURNKEY INCLUSIONS:

- 7-star energy rating
- Higher ceilings 2700mm to ground floor
- Colourbond Roof
- Fixed site costs (no more to pay)
- Timber flooring throughout
- LED downlights throughout
- 900mm kitchen appliances with Dishwasher
- Roller blinds

🛏 3 🚿 2 🚗 2 📏 372 m²

Price \$550,000 To \$570,000

Property Type Residential

Property ID 6712

Land Area 372 m²

Floor Area 133 m²

Agent Details

Kevin Woodhoo - 0490030197

Office Details

Victorian House & Land Specialists
8 Universal Way Cranbourne West
VIC 3977 Australia
03 5995 3911



- Developer and Estate requirements
- Coloured concrete Driveway
- Premium Feature Façade Inc Feature Light Fittings
- Remote control panel lift garage door
- Porcelain tiles as standard to wet areas
- Timber flooring throughout
- Reverse Cycle Heating and Cooling System
- NBN Connection
- AND MORE...

*Land is available at the time this publication was advertised. kindly enquire with agent for availability. The price does not include transfer duty, settlement costs, community infrastructure levies imposed, or any other fees or disbursements associated with the settlement of the land. Base price includes standard brick façade. Price/information is subject to change without notice. Images are for illustration purpose only and house is to be constructed.

The above information provided has been furnished to us by the vendor/s. We have not verified whether or not that information is accurate and do not have any belief in one way or the other in its accuracy. We do not accept any responsibility to any person for its accuracy and do no more than pass it on. All interested parties should make and rely upon their own inquiries in order to determine whether or not this information is in fact accurate.