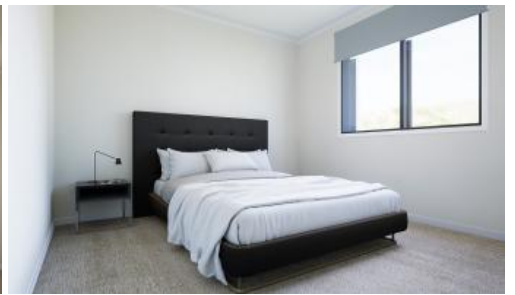
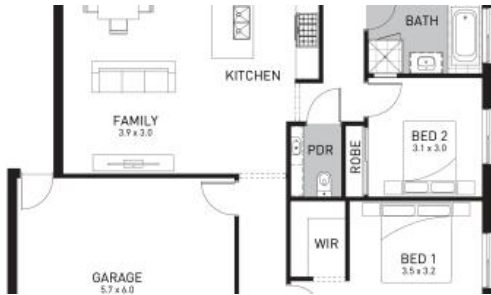


Just Listed



Lot 1 Petty Road (Bunyip Meadows Estate), Bunyip



### A Life of Space, Peace & Possibility – Titled Land, Fixed Price House & Land Package – 701m<sup>2</sup> Lot in Bunyip

Looking to escape the hustle and bustle while staying close to everything that matters?

This is your perfect chance to secure a stunning Fixed-Price House & Land Package on a Titled 701m<sup>2</sup> Block in the serene and family-friendly Bunyip Meadows Estate.

Just minutes from Bunyip Train Station, offering an easy daily commute. You're also close to the Bunyip Town Centre, local shops, quality schools, and cosy cafés—everything your family needs within reach. Enjoy a family-friendly neighbourhood with nearby parks, walking trails, and playgrounds for active outdoor living. Plus, with Gumbuya World just around a 10-minute drive away, fun-filled weekends are always on the cards!

Whether you're starting your home ownership journey, looking for an investment property or simply downsizing to enjoy a relaxed pace of life—this opportunity ticks every box.

Call **Matt** today on **0410 692 304** to make your dream move to Bunyip

🛏️ 4 🚿 2 🚗 2 📏 701 m<sup>2</sup>

**Price** \$737,293 Fixed Price

**Property Type** Residential

**Property ID** 6738

**Land Area** 701 m<sup>2</sup>

**Floor Area** 207 m<sup>2</sup>

#### Agent Details

Matthew Bonnett - 0410692304

#### Office Details

Victorian House & Land Specialists  
 8 Universal Way Cranbourne West  
 VIC 3977 Australia  
 03 5995 3911



Meadows a reality!

## INCLUSIONS

- Fixed Site Costs & Rock Removal
- 900mm Kitchen Appliances
- 20mm Caesarstone Benchtop to Kitchen/Ens/Bath
- Dishwasher
- Tiled Shower Bases
- Floor tiles to Ensuite, Bathroom, Laundry, WC, Kitchen, Meals and Entry, as per plans.
- Carpet to non-tiled areas.
- Coats of Wattle Paint to Internal Walls
- Blockout Roller Blinds
- 2 Split Systems to Family Room and Bedroom 1
- Gas ducted heating to Living Areas and Bedrooms
- Led Downlights to Main Living Area
- Plain Coloured concrete paving to Driveway
- Remote Control Garage Door
- Flyscreens and window locks to be installed on all openable window sashes.
- And so much more.... Please contact Matt for the full inclusion list

---

\* Price and information are subject to change without notice. Land is available at the time this publication was advertised. Kindly enquire with the agent about availability. The price does not include community infrastructure levies imposed, or any other fees or disbursements associated with the settlement of the land. Building Construction price is subject to additional design guidelines & travel when applicable. The base price includes a standard brick façade. Images are for illustration purposes only. The house to be constructed.

The above information provided has been furnished to us by the vendor/s. We have not verified whether or not that information is accurate and do not have any belief in one way or the other in its accuracy. We do not accept any responsibility to any person for its accuracy and do no more than pass it on. All interested parties should make and rely upon their own inquiries in order to determine whether or not this information is in fact accurate.